



MrGreen





Christchurch Road

Bournemouth

£265,000

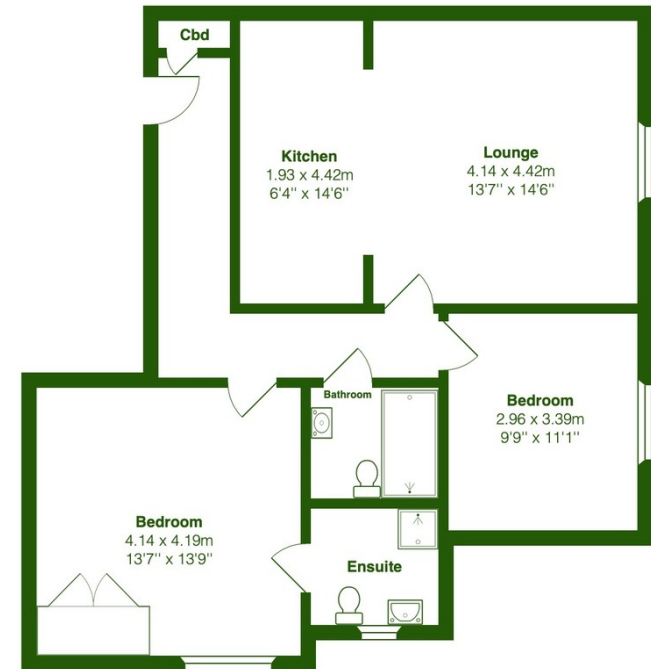
A two double bedroom flat situated on Christchurch Road. This bright flat benefits from two bathrooms, a communal garden, and allocated parking. It's just a short walk to Bournemouth's award-winning beaches. CHECK OUT OUR 3D VIRTUAL TOUR.

Property Description

Stepping through the front door of this second-floor flat and going through the entrance hall, you'll find the master bedroom, which benefits from built-in storage and an ensuite bathroom. Going into the open plan kitchen and living area, it's a fantastic space, with some wooden paneling to give it a tasteful touch. It's a great size and perfect for having friends over or enjoying an evening at home. The kitchen is fitted with a gas oven and hob, a fridge freezer, and a washing machine. The kitchen offers oodles of storage as well as a lovely breakfast bar with some barstool seating. Heading into the second bedroom, you'll notice that it's a good size and has no shortage of sunshine beaming through the windows. Lastly is the second bathroom, which has a dark modern finish and is fitted with a large shower. This flat is so tasteful and benefits from lift access, your own parking space and a communal garden. Situated just a short walk from the beach and close to the heart of Bournemouth, these delightful flat offers so much convenience!

Agent Notes

Length of the lease – 125 years from 2009
Service charge amount - £2050 per annum
Ground rent amount - £250 per annum
Holiday lets – Not permitted
Pets permitted - Yes with written confirmation



Total Area: 75.4 m² ... 812 ft²

All measurements are approximate and for display purposes only





MrGreen



MrGreen

01202 387718