



For Sale

24 The Slad, Stourport-on-Severn

£239,950

3

2

1

220 m²

90 m²

David Jones

07958 915717

david.jones@thepropertyexperts.co.uk

REDUCED FOR QUICK SALE - A spacious, extended modern three bedroom semi-detached property in semi-rural cul-de-sac position with views over countryside to the front.

This very nicely proportioned and well presented three bedroom semi-detached property is situated towards the end of the cul-de-sac, in this modern development at Wilden Top between Stourport and Hartlebury whilst being very accessible to Kidderminster via Wilden Lane.

Set back behind a neat lawned foregarden and driveway, the property has an attractive frontage. Gas fired central heating is installed and dual colour upvc double glazing is fitted throughout.

The spacious lounge/ dining room measures an impressive 24' in length, with wood laminate flooring and a 'pebble' style gas fire set in feature fireplace.

A wide arch from the dining room opens through to the kitchen, fitted with a stylish modern range of gloss white cabinets and including gas hob, electric double oven, steel hood and wood effect work surfaces.

The seller may possibly be prepared to sell the freestanding Beko fridge/ freezer, washing machine & tumble dryer by separate negotiation.

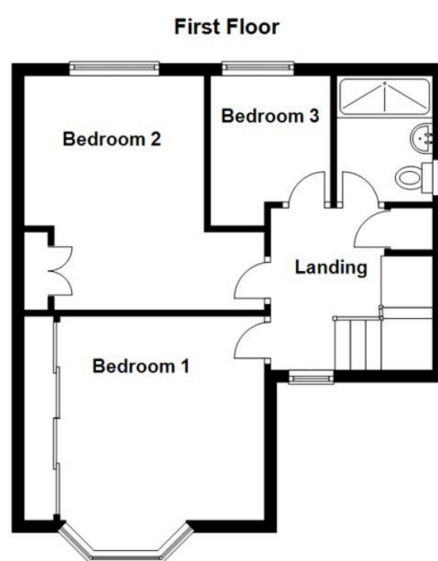
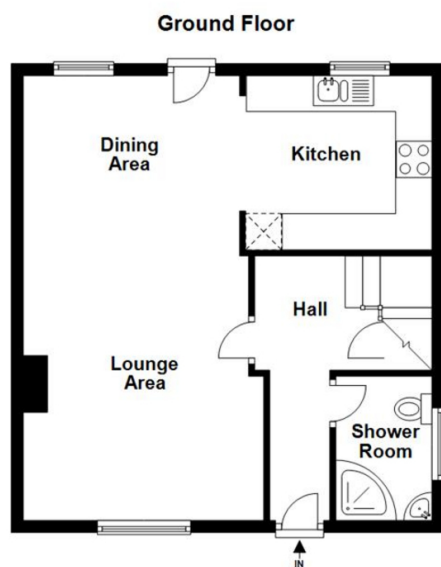
The ground floor has been extended to provide a large shower room with



 **The Property Experts**

The Property Experts UK

01562546606



- 24' Lounge/Dining Room
- Modern Fitted Kitchen with Hob and Oven
- Two Shower Rooms
- Low Maintenance Rear Gardens
- EPC Rating D

