



**For Sale**

**Spring Cottage 8 Lowick Road, Islip**

**Guide Price £425,000**

**3**

**2**

**1**

**2303.5 sq ft**

**1065.6 sq ft**

**Miranda Menzies**

07979042925

miranda@thepropertyexperts.co.uk

**Spring Cottage is an absolutely stunning 3 bedroom home located in the popular village of Islip. With three reception rooms, 3 double bedrooms with a large ensuite bathroom to the master it is a great size. Comes with a single garage.**

Islip is a very sought after village. Surrounded by countryside and just a short walk into the market town of Thrapston. Spring Cottage is an idyllic property located on an enviable plot. Through the front door of the property you are greeted with an entrance porch. Past this space you come to a great sized sitting room. You will find dual aspect windows one of which has its own window seat and window shutters. There is limestone flooring and a feature fireplace with a multi fuel log burner. The country style kitchen has plenty of low level and wall mounted kitchen cabinets. Built in Neff kitchen appliances, installed in 2020. There is a mix of granite and oak worktops and a butlers sink. This space flows nicely into a delightful conservatory which overlooks the stunning garden. The formal dining room is bright and spacious and would make a great work from home office. There is a large feature window overlooking the garden. On the first floor there is a good sized landing with a large built in storage cupboard. The master bedroom has built in wardrobes. There is a velux window and a large window to the rear of this room. The ensuite bathroom comes with a bath and an electric shower over the top. There is a wall mounted heated towel rail. The sink has lots of built in vanity storage space. Bedroom two is a great sized double room, with white exposed floorboards. There is also a

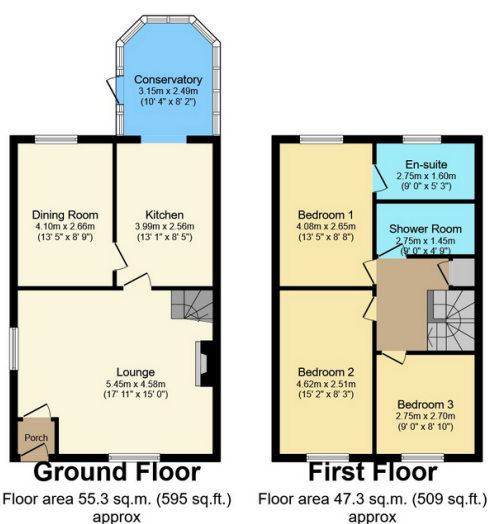


**The Property Experts**

**The Property Experts UK**

01536609970





Total floor area 102.6 sq.m. (1,104 sq.ft.) approx

This Floor Plan is for illustration purposes only and may not be representative of the property. The position and size of doors, windows and other features are approximate. Unauthorized reproduction prohibited. © PropertyBOX

- Stunning 3 bedroom cottage
- Located in the popular village of Islip
- Single garage and off road parking
- Impeccably presented both inside and out
- Three reception rooms
- Multi fuel log burner
- Packed with charm and character
- Ensuite to master bedroom
- Neff integral kitchen appliances

