



For Sale

18 Carty Road, Leicester

Offers Over £250,000

A PERFECT FAMILY HOME! 3-Bedroom End-of-Terraced Town House located in Hamilton.

 **3**

 **2**

 **2**

 **1049 sq ft**

Ideal Family home PEACEFULLY SITUATED in Hamilton with OUTSTANDING Ofsted Rated Schools and Lovely Natural Surroundings!

A beautiful End-of-terrace house with 3 BEDROOMS, 2 BATHROOMS and downstairs W/C.

Garage/Off-street Parking. Cosy Rear Garden.

OPEN HOUSE Saturday 17th December 10-1 By Appointment Only

Offers over £250,000

Council Tax Band - C

EPC Rating - C

Tenure - Freehold

Moin Emad

07897443332

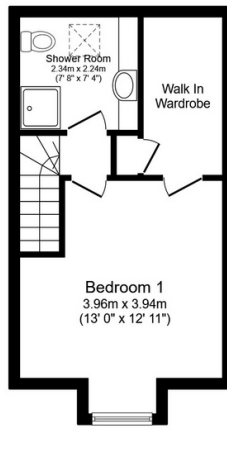
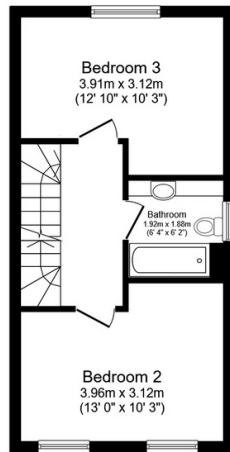
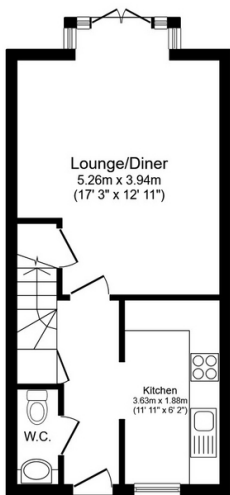
Moin.Emad@newman.uk.com



 **The Property Experts**

The Property Experts UK

02038197944



Total floor area 97.5 sq.m. (1,049 sq.ft.) approx

This floor plan is for illustrative purposes only. It is not drawn to scale. Any measurements, floor areas (including any total floor area), openings and orientation are approximate. No details are guaranteed, they cannot be relied upon for any purpose and they do not form part of any agreement. No liability is taken for any error, omission or misstatement. A party must rely upon its own inspection(s). Powered by www.focalagent.com

- EPC Rating - C
- Three Bedrooms
- End Terrace Home
- Garage
- Popular Residential Location
- En Suite To Master Bedroom
- Chain Free
- Ground Floor Cloakroom
- OPEN HOUSE Saturday 17th December 10-1 By Appointment Only

