

Walsham Close, Thamesmead, SE28 8ND



3



1



1



731 sq ft

www.jamesgorey.com 020 8050 3732

The Details...

This 3 Bedroom End of Terrace House is offered to the market Chain Free! Set in a cul-de-sac, backing onto one of Thamesmead's picturesque Canal settings, this feels like an ideal family-home-setting with pleasant surroundings, plus easy access to schools, shops, medical centres, supermarket, plus bus links offering quick travel to Abbey Wood Train Station where CrossRail is set to arrive in the 1st half of 2022! So a great choice for either a family home or a great buy-to-let investment!

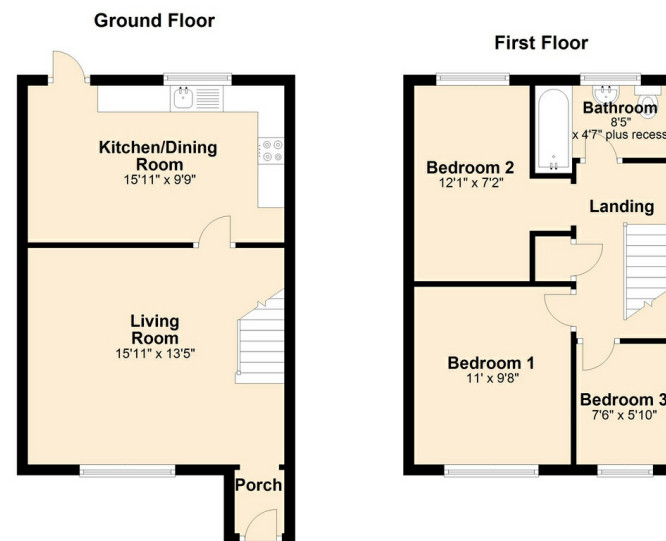
The accommodation briefly comprises of a Porch, a spacious Lounge, Kitchen Dining Room with oven + hob and extractor hood, plus space for 2 appliances.

Upstairs, there is a Landing with built in storage and loft hatch, a Single Bedroom, Two Double Bedrooms, and a Family Bathroom with 3 pc suite: low level WC, pedestal wash basin and bath with shower.

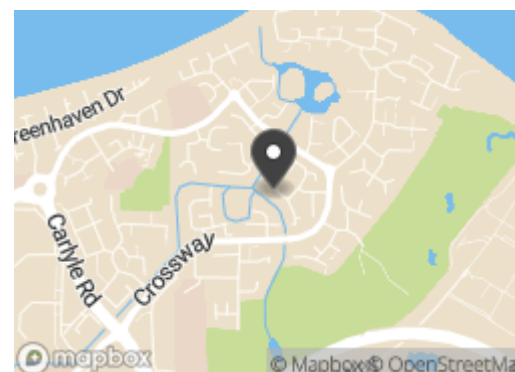
To the rear, the Garden measures 30' x 19' and is mostly-shingled so very low maintenance requirements, plus a South-Westerly aspect means you capture the best of the day to evening sun during the warmer months - perfect for family and friend BBQ get-togethers! To the front, there is a generous Garden which is laid to lawn - plenty of space to add some personal touches such as flower beds, shrubs or trees, or even space to consider for Off Road Parking (planning consent must be obtained).

The cul-de-sac has free-for-all parking, and there are parking enclosures too, so finding a spot for your car shouldn't be an issue. Walking just a few metres from the house, you'll find a footbridge where you can pause and soak in the joys of nature as the geese, ducks, and other waterfowl go about their way along the canal, plus the seasonal birds in the trees. A truly picturesque spot worth giving some attention to.

We expect a lot of early interest, so don't delay - call James Gorey Estate Agents Today to arrange your viewing!



For Illustrative Purposes Only. Not To Scale
Plan produced using PlanUp.



The details shown are for guidance only and do not form part of the contract. We recommend verifying all details through your solicitor.

Get in touch...



Paul Fryer

020 8050 3732

Paul.fryer@jamesgorey.com